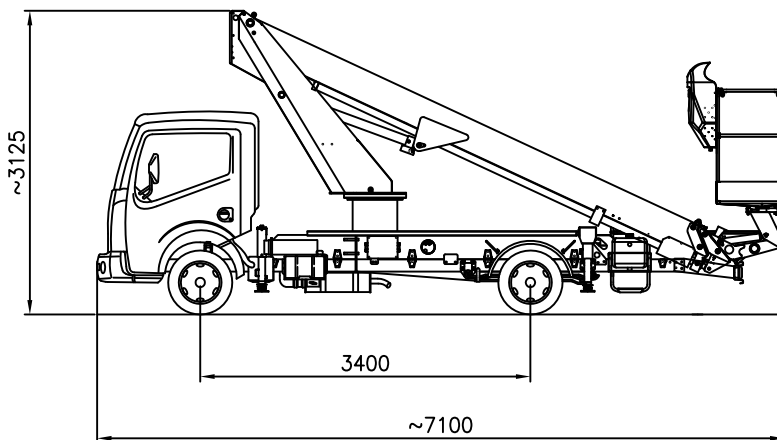
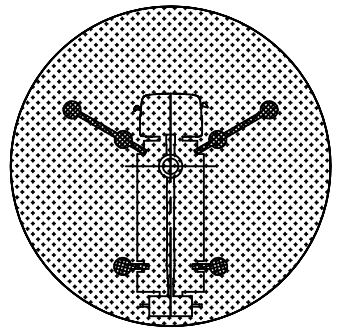
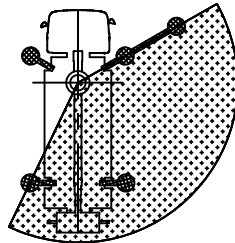
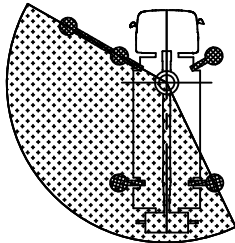
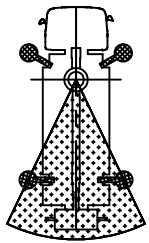


APROXIMATE DATA - TECNICHE AENDERUNGEN VORBEHALTEN
 DONNES INDICATIVES - DATI INDICATIVI

Aggiornamenti - Modifiche:

A	C	F
D	B	E



MAX SAFE WORKING LOAD
 MAX NENNTRAGFAHIKKEIT IM KORB
 MAX CHARGE NOMINALE DANS LE PANIER
 MAX PORTATA NOMINALE IN NAVICELLA

=
 200 KG

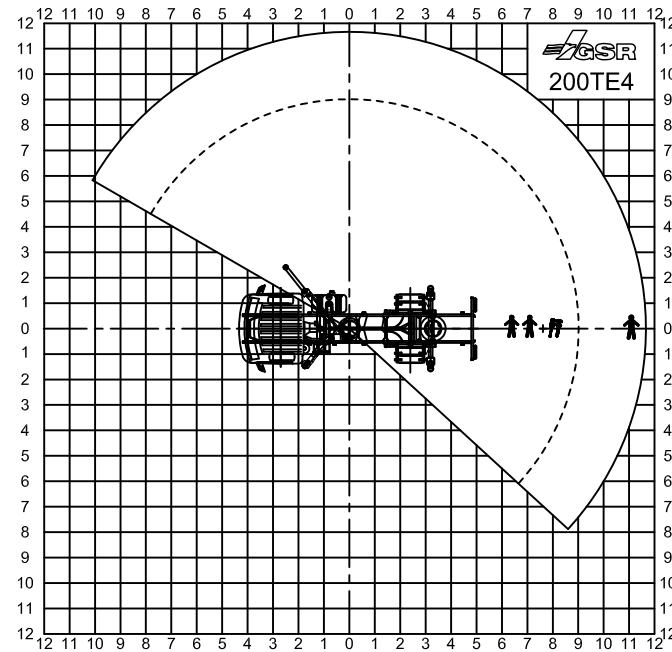
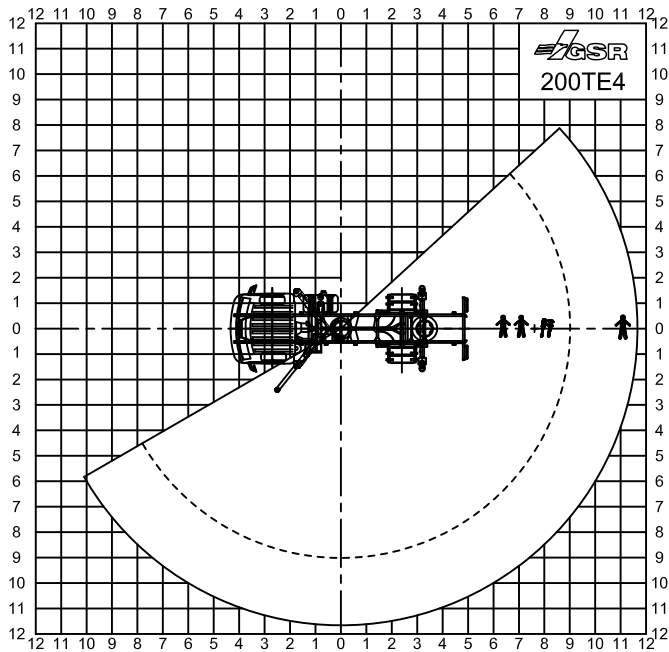
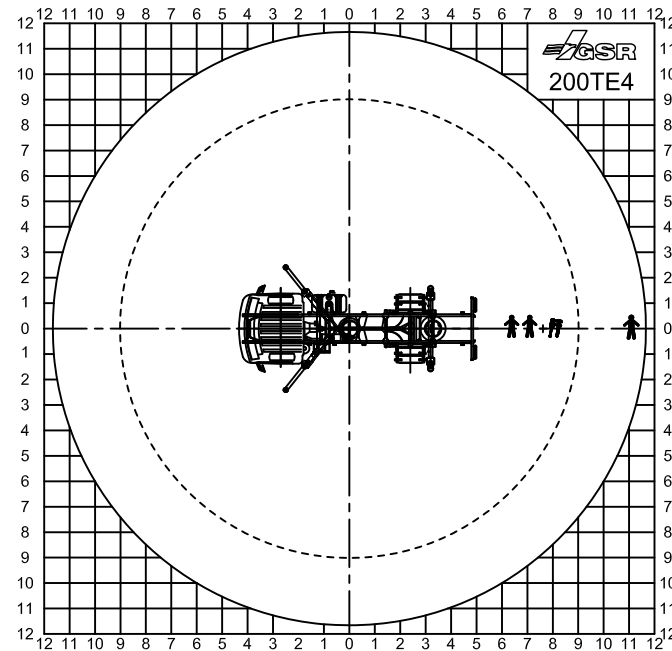
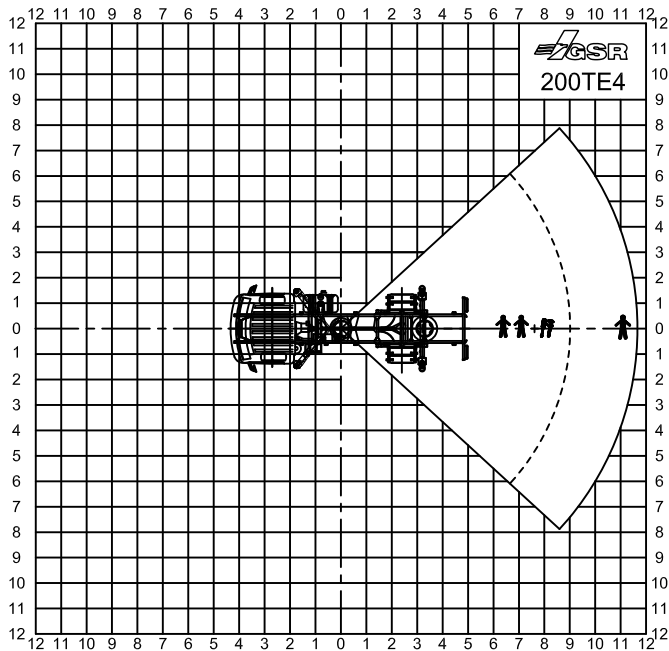


DENOMINAZIONE
200TE4 Comfort XEV
 NISSAN 35.11 - 3.5 t

DATE 08-09-2010
 CODE PRP1559

Aggiornamenti - Modifiche:

C	F
B	E
A	D



MAX SAFE WORKING LOAD
MAX NENNTRAGFAHIKKEIT IM KORB
MAX CHARGE NOMINALE DANS LE PANIER
MAX PORTATA NOMINALE IN NAVICELLA

 =
 200 KG



DENOMINAZIONE
200TE4 Comfort XEV
 NISSAN 35.11 - 3.5 t

DATE	30-07-2010
CODE	DRAFT

APROXIMATE DATA - TECNISHE ANDERUNGEN VORBEHALTEN
 DONNES INDICATIVES - DATI INDICATIVI